

SORDINA

technology serving life



Sordina Medical Technologies S.r.l.

Tel +39 0444 233750 - Fax +39 0444 233790
info@sordina.com - www.sordina.com

Registered Office

Galleria Pozzo Rosso 13
36100 Vicenza, Italy
REA VI-357804

STS
Operating Table

High technological solutions
applied to our most versatile
electrical OT



Since more than 140 years Sordina provides its know how to Surgical Teams and they're Patients offering high quality and high reliability Operating Tables designed to satisfy numerous needs.

Italian passion, global vision: according to this concept Sordina designed a new generation of high-performances Operating Tables able to fulfill User's expectations. Sordina engineered the new Operating Table line together with Surgical Teams to ensure product's highest reliability and use friendly.

The new Operating Table ST5 greatly fulfill Operating Room Team's needs offering an outstanding quality-price relation. The ST5 offers high technical performances with a competitive price.

Thanks to Sordina's historical and widely confirmed experience the new Operating Table ST5 it's offered with a precise, solid and long lasting electro-hydraulic heart.

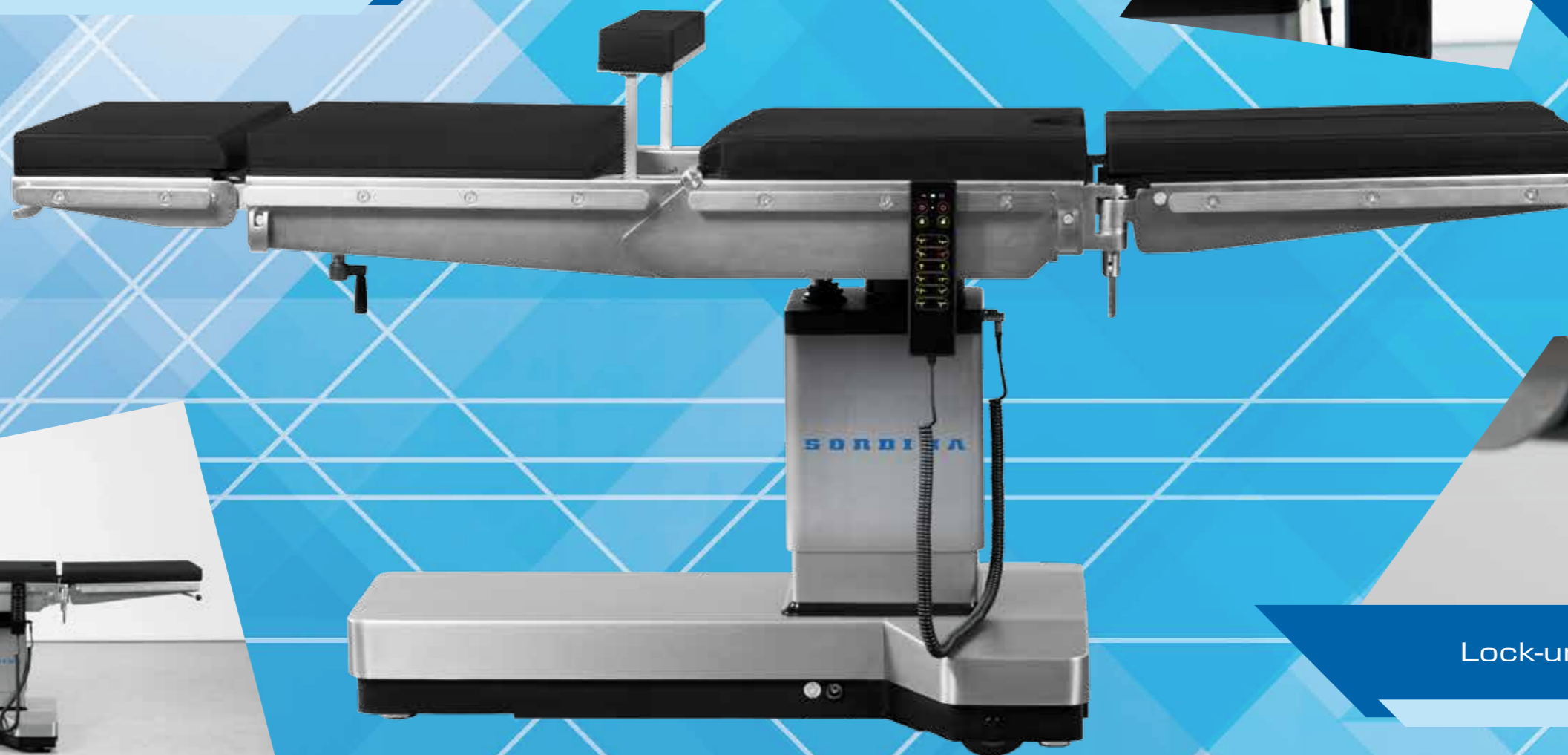
Technology serving life, the new generation

Antistatic, radiolucent, latex free cushions

Remote control

Lock-unlock system

To ensure an optimal radiolucency translation movement is available for the whole operating plane



SORDINA

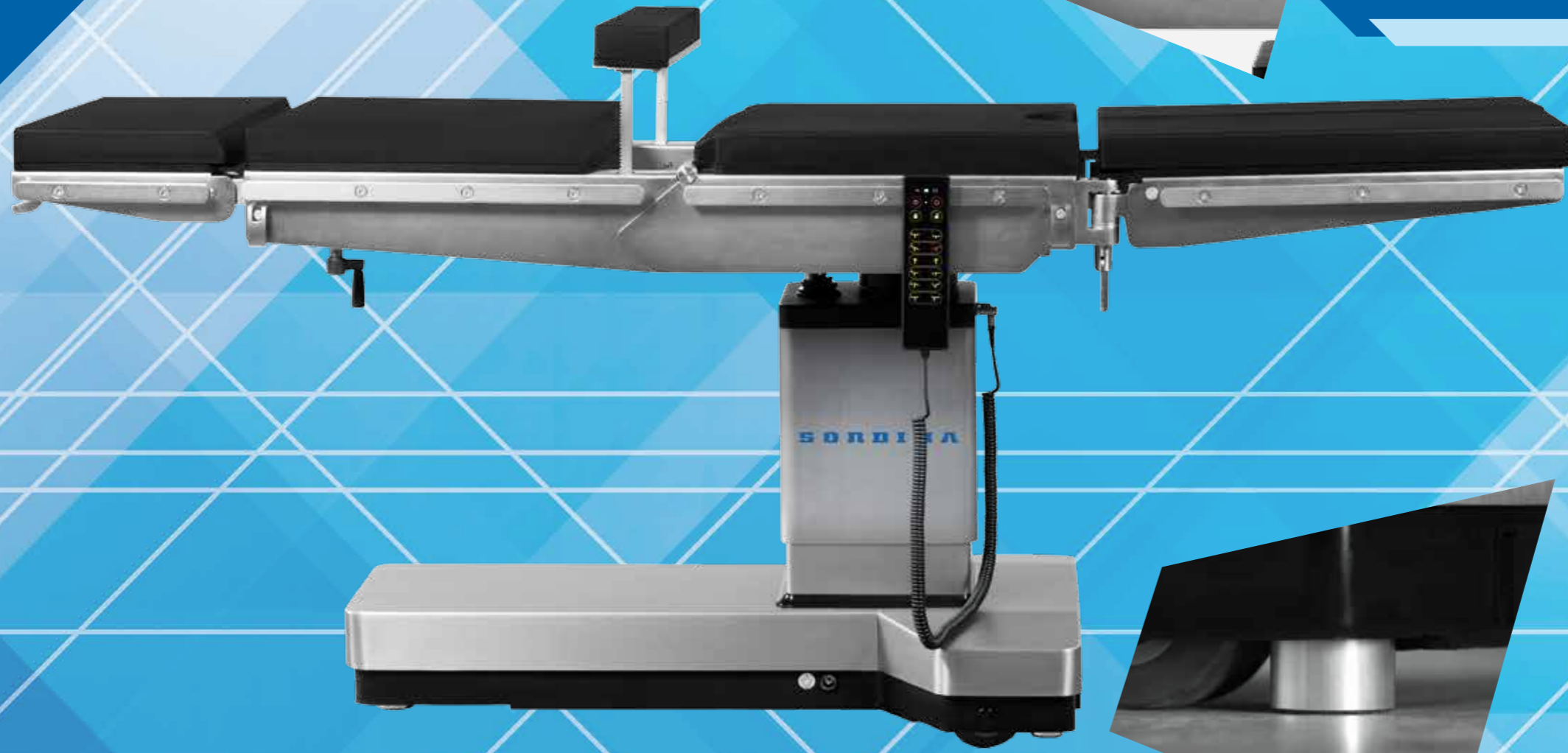
Technology serving life, the new generation



Double joint head section



Kidney bridge



Floor locking system actioned by a single pedal

Technology serving life, the new generation

The operating plane is fixed mounted on a totally mobile system conceived and made to provide the highest safety and comfort standards, both for the Patient and for the user.

The Operating Table it's made by a central module which can be integrated with an ample range of configurations for head, back and leg sections; thanks to this modularity the ST5 it's able to satisfy Patient's positions according to the required surgical specialty.

Being entirely manufactured in inox stainless steel, ST5 offers high mechanical resistance, great corrosion resistance, and easy interchangeability of plain sections. Sordina, its new Operating Table line, decided to combine high section radiotransparency with a 300 mm electro-hydraulic longitudinal translation, such solution allows a great exposure of all anatomic districts to the most advances digital imaging technologies.

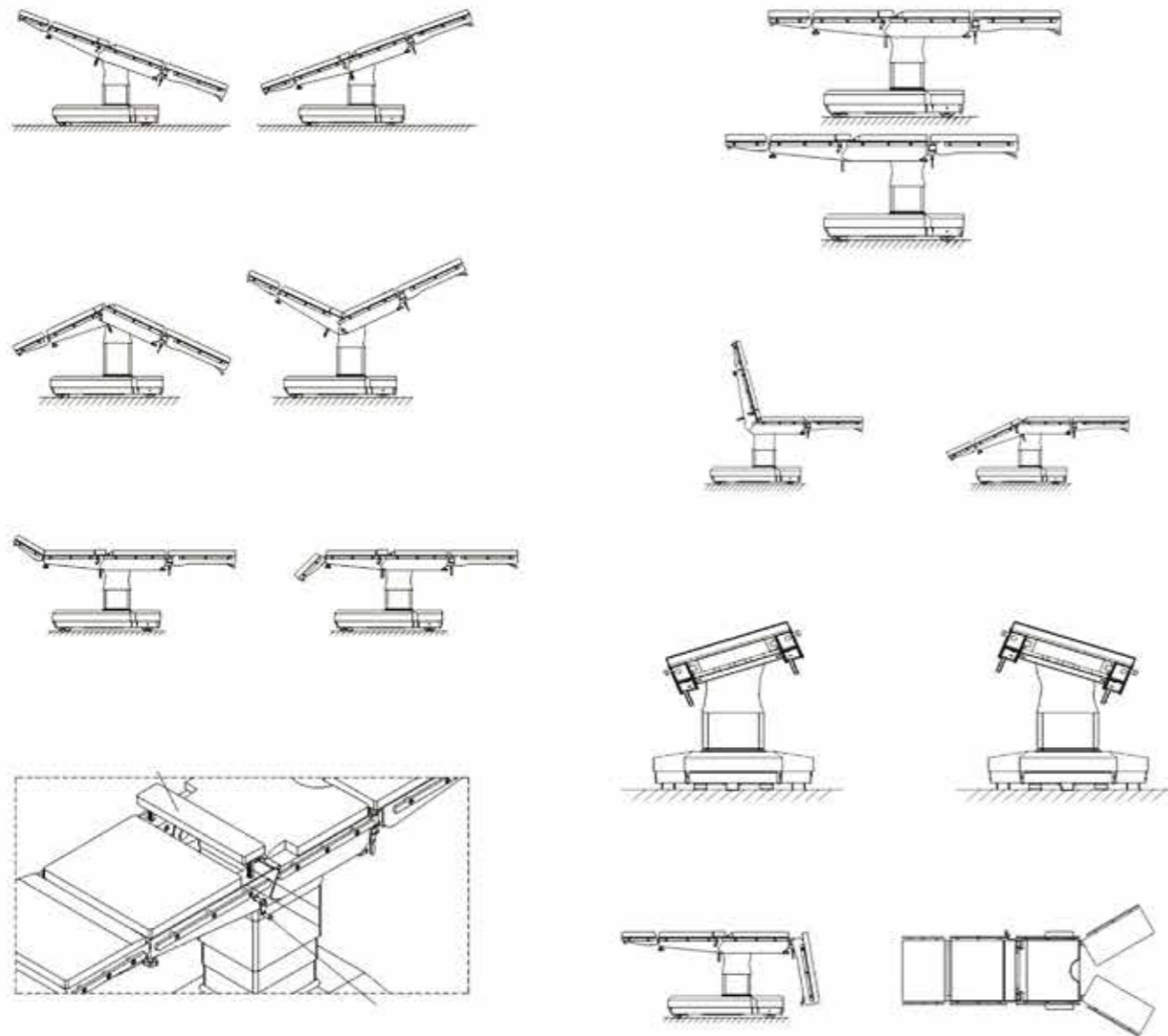
All the surfaces are greatly polished ensuring easy and fast cleaning-disinfection procedures

ST5 electro hydraulic smooth movements ensure precise, elegant and long lasting movements



Technology serving life, the new generation

TECHNICAL SPECIFICATION



| | |
|----------------------------------|---------------|
| Table Length | 2020 mm |
| Table Width (without side rails) | 520 mm |
| Table Height (without-pads) | 680 mm-940 mm |
| Trendelenburg/ Reverse | 30°/30° |
| Lateral Tilt (left/ right) | 20°/20° |
| Back Plate Up/Down | 75°/25° |
| Head Plate Up/Down (detachable) | 30°/45° |
| Leg Plate Up/Down (detachable) | 5°/90° |
| Leg Plate Split (detachable) | 180° |
| Kidney-bridge Elevator UP | 136 mm |
| Longitudinal Sliding | 300 mm |
| Loading Capacity | 297 Kg |

Technology serving life, the new generation

SUPERB VERSATILITY

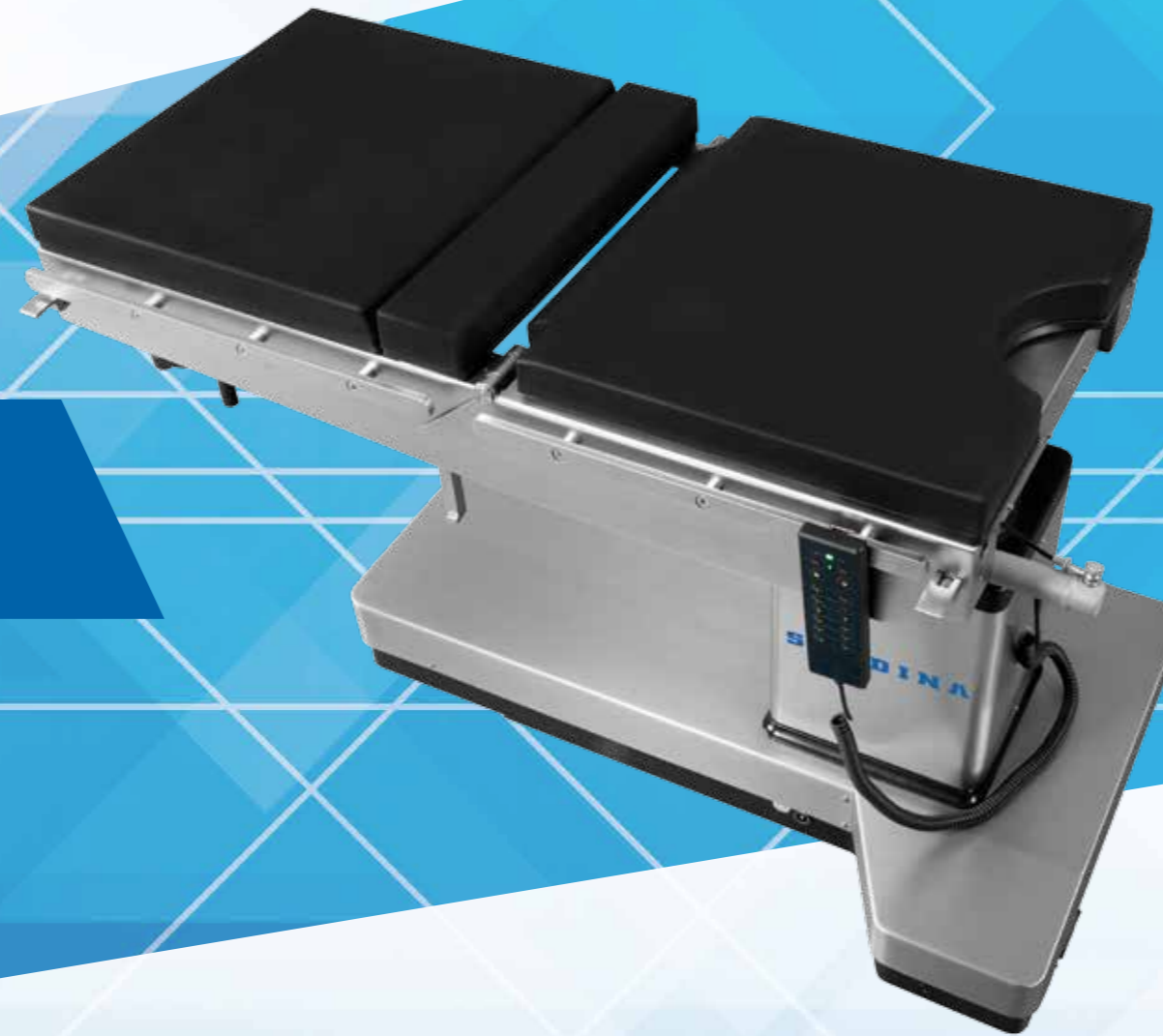


Leg sections allows multiple configurations



Leg sections are actioned manually by gas spring

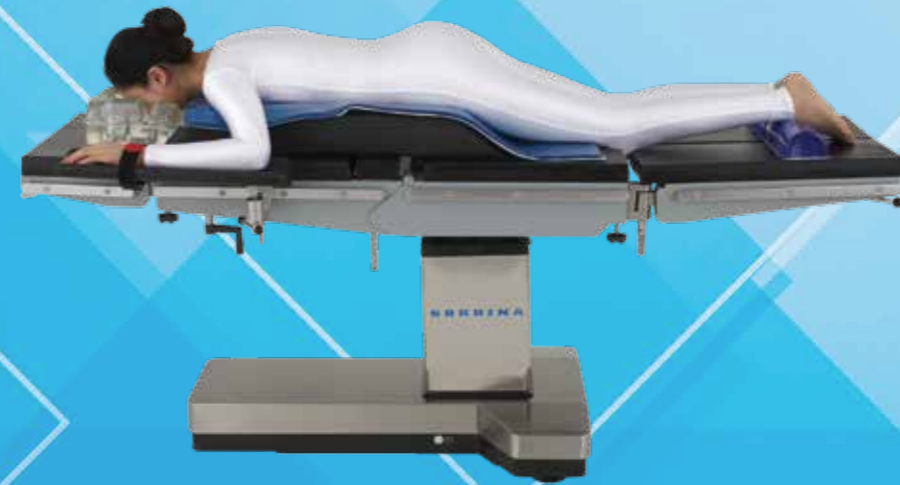
Double joint head sections are actioned manually by gas spring



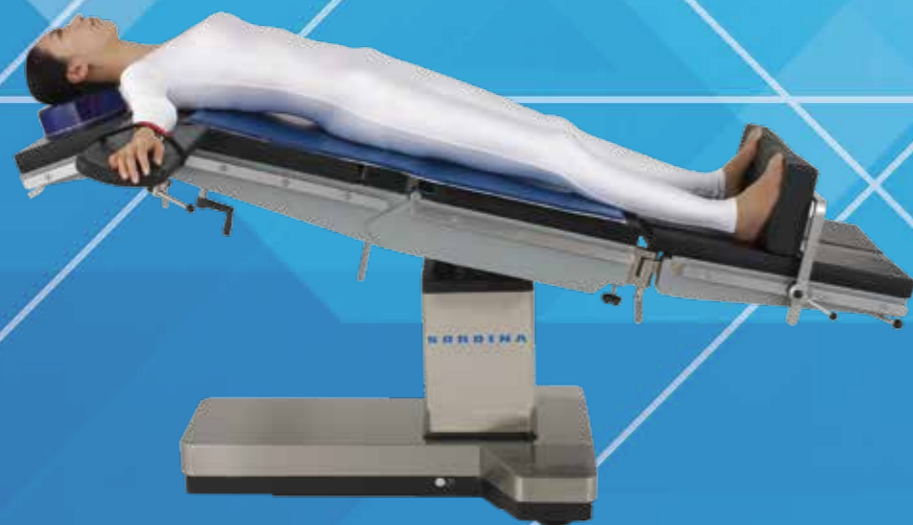
Technology serving life, the new generation



Kidney Bridge



Spine Surgery



Thorax Surgery



Prone Position for Neurosurgery



Gynecological/Urological Surgery



Knee-Chest Position



Orthopedic Surgery



Orthopedic Surgery Lateral Position



Knee Surgery



Neurosurgery

**GUARANTEED AND CERTIFIED
QUALITY SINCE 1875**

SERVICE ASSISTANCE

Numero Assistenza

+39 0444 233 750

service@sordina.com

